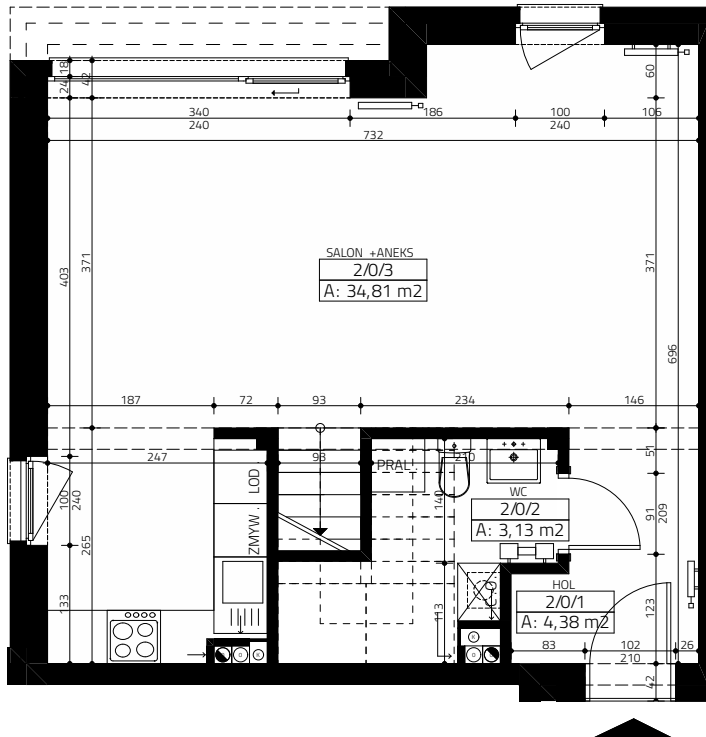
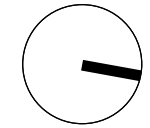
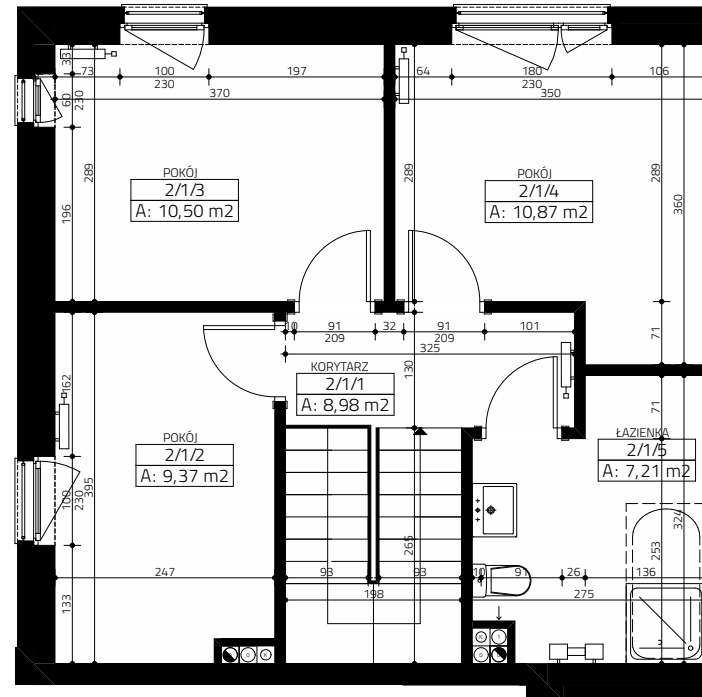


4
pory
roku



PARTER



PIĘTRO



BUDYNEK 8
lokal 8/2
powierzchnia 89,25 m²
ogród 110 m²

| | |
|------------------------|----------------------------|
| PARTER | 42,32 m² |
| HOL | 4,38 m ² |
| WC | 3,13 m ² |
| SALON + ANEKS KUCHENNY | 34,81 m ² |
| PIĘTRO | 46,93 m² |
| KORYTARZ | 8,98 m ² |
| ŁAZIENKA | 7,21 m ² |
| POKÓJ | 10,87 m ² |
| POKÓJ | 10,50 m ² |
| POKÓJ | 9,37 m ² |

